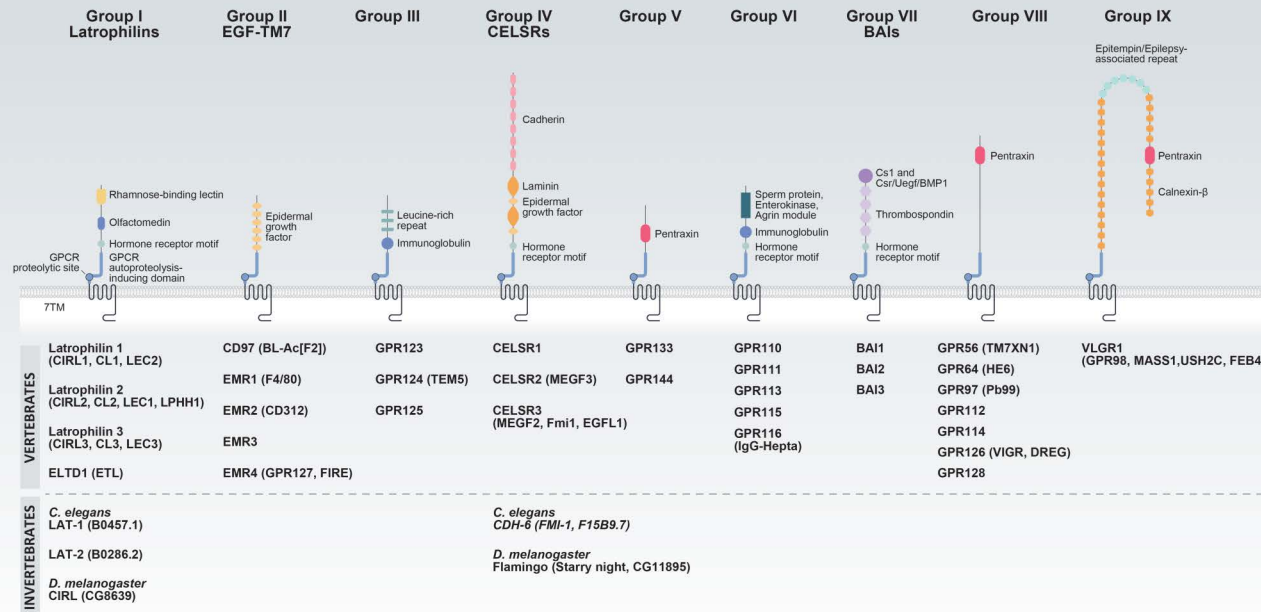
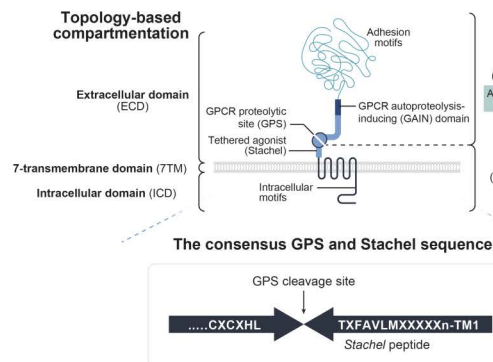


Adhesion GPCRs

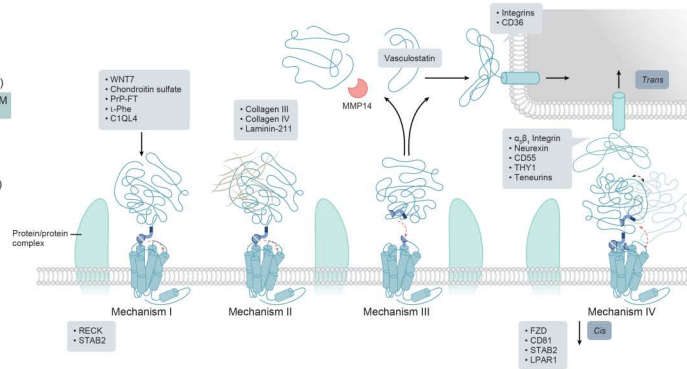
Adhesion GPCR Groups (33 total aGPCRs)



Adhesion GPCR Structure



Adhesion GPCR Interaction Models



References:

1. *J Biol Chem*. 2020 Oct 9;295(41):14065-14083.
2. *Nat Rev Drug Discov*. 2019 Nov;18(11):869-884.
3. *Nat Rev Neurosci*. 2016 Sep;17(9):550-61.
4. *Handb Exp Pharmacol*. 2016;234:67-82.
5. *Sci Signal*. 2013 May 21;6(276):re3.

Featured Products

Mouse Tissues: BAI1 antibody [HL4190] (GTx643004) | BAI1 antibody [HL4188] (GTx643002) | BAI1 antibody [HL4187] (GTx643001) | BAI2 antibody [HL4093] (GTx642532)

RPML-8226 cells: BAI1 antibody [HL4187] (GTx643001) | BAI2 antibody [HL4093] (GTx642532)

SH-SY5Y cells: BAI3 antibody [HL4095] (GTx642534) | CD97 antibody [HL1925] (GTx637674) | CELSR1 antibody [HL4515] (GTx644085) | CELSR2 antibody [HL4484] (GTx644051)

MCF-7 cells: CELSR2 antibody [HL4485] (GTx644052) | EMR2 antibody [HL4418] (GTx643707) | ETL antibody [HL5037] (GTx645207) | F4/80 antibody [HL4141] (GTx642946)

Mouse Tissues: F4/80 antibody [HL4142] (GTx642947) | GPR97 antibody [HL4088] (GTx642527) | ADGRG5 (GPR116)-transfected 293T | GPR114 antibody [HL3850] (GTx642084) | GPR116 antibody [HL4482] (GTx644049)

Human tissues: GPR123 antibody [HL4122] (GTx642568) | GPR125 antibody [HL4659] (GTx644532) | GPR126 antibody [HL4480] (GTx644047) | GPR128 antibody [HL4855] (GTx644918)

Mouse hippocampal CA1: GPR133 antibody [HL4530] (GTx644100) | GPR144 antibody [HL4902] (GTx644967) | Lateralphlin 1 antibody [HL3853] (GTx642087) | Lateralphlin 2 antibody [HL4090] (GTx642529)

