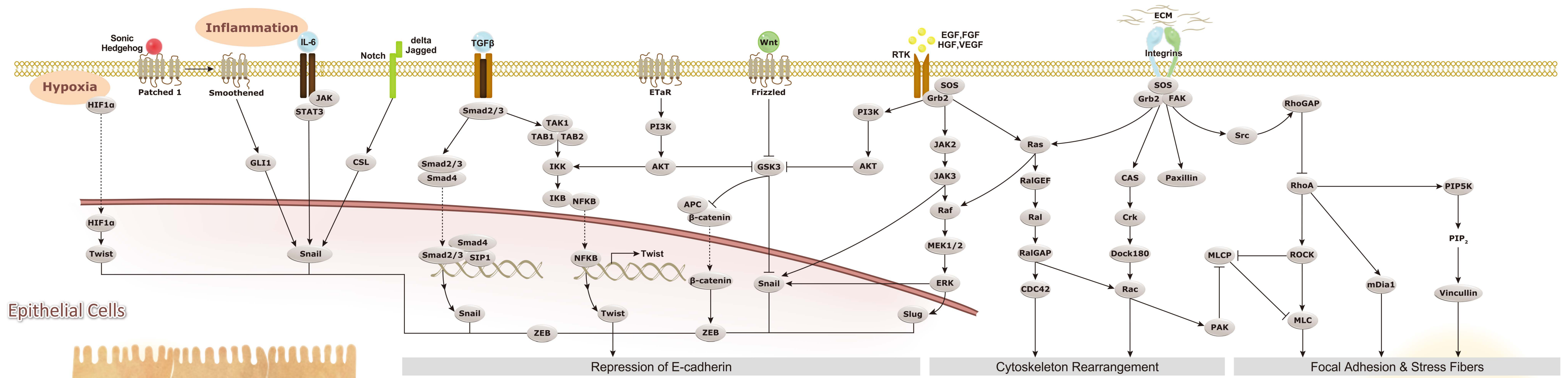
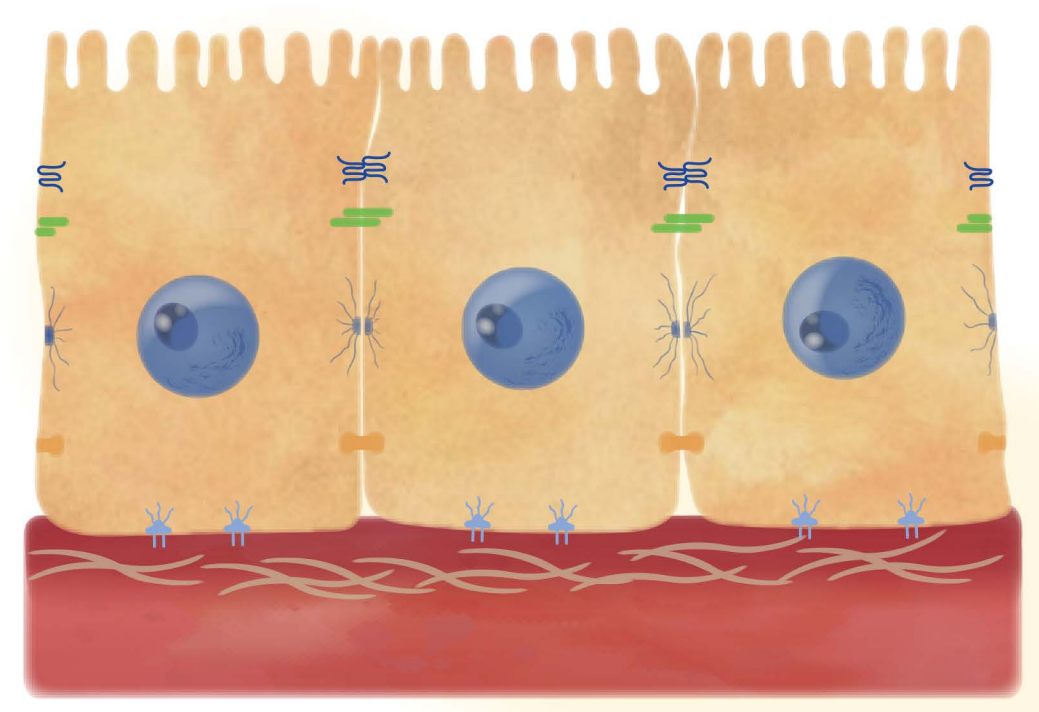


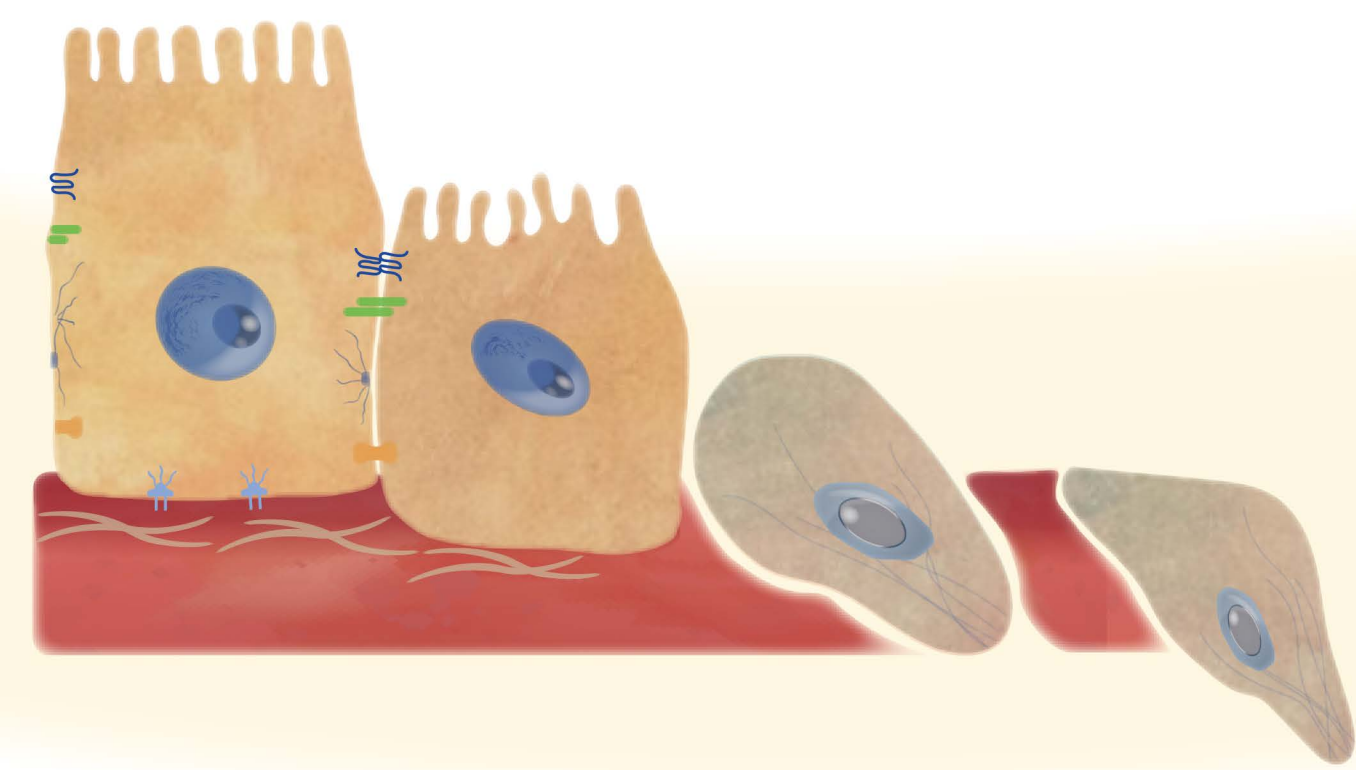
# Epithelial-Mesenchymal Transition



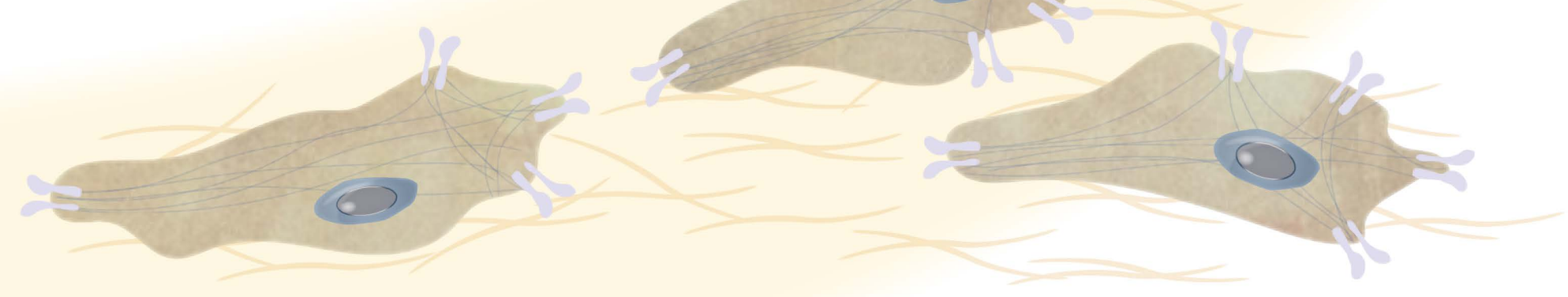
Epithelial Cells



EMT



Mesenchymal Cells



## Epithelial Markers

 E-Cadherin antibody [HL1229] (GTX636577)	 EpCAM antibody [HL1339] (GTX636759)	 Cytokeratin 8 antibody [NIC1] (GTX112975)	 Cytokeratin 18 antibody [N2C2] Internal (GTX105624)
 Cytokeratin 19 antibody [HL1165] (GTX636469)	 MUC1 antibody (GTX100459)	 Occludin antibody (GTX114949)	 ZO-1 antibody [HL1185] (GTX636491)

## EMT- Inducing Transcription Factors

 beta Catenin antibody [HL1753] (GTX637403)	 SNAI1 antibody (GTX125918)	 Twist1/2 antibody (GTX127310)	 ZEB1 antibody [HL2245] (GTX638294)
--	--------------------------------	-----------------------------------	--

## Mesenchymal Markers

 alpha Smooth Muscle Actin antibody [HL1419] (GTX636885)	 Vimentin antibody [HL1506] (GTX636980)	 SPARC antibody (GTX133747)	 N-Cadherin antibody (GTX127345)
 Fibronectin antibody [N1N2] N-term (GTX112794)	 Integrin beta 1 / CD29 antibody [HL1255] (GTX636657)	 MMP2 antibody [HL1208] (GTX636525)	 Vitronectin antibody (GTX103475)

