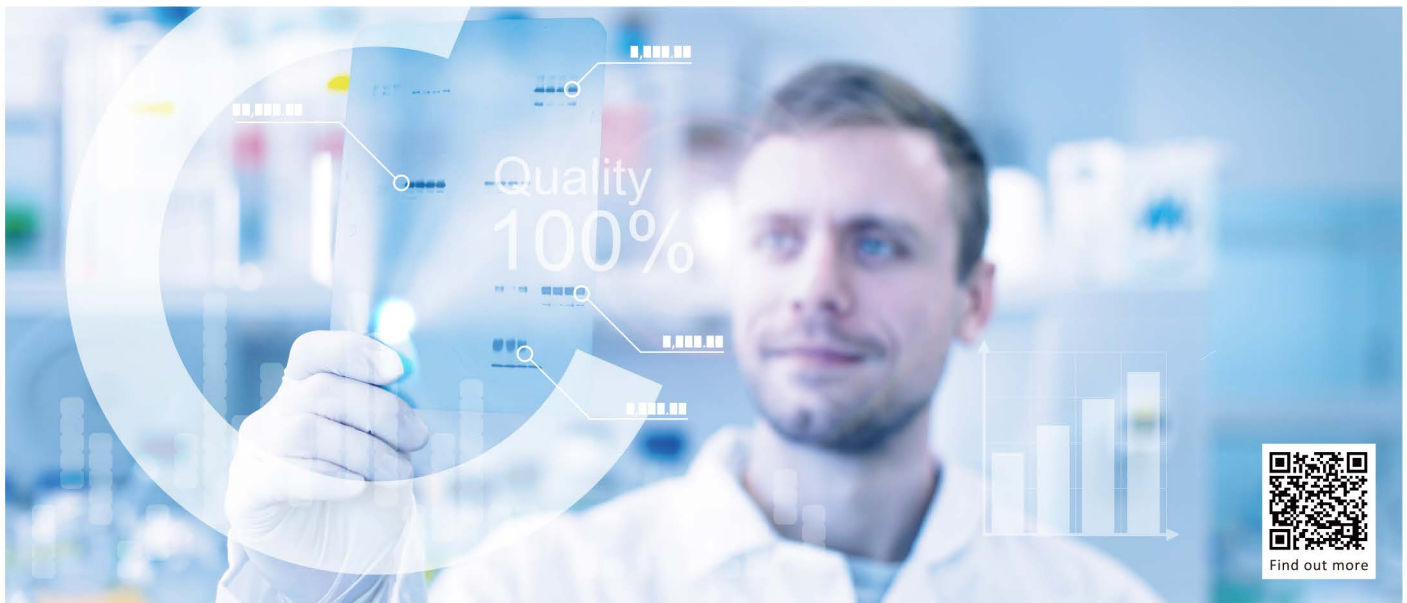




## Loading Controls



Loading controls are used to ensure that equal amounts of each protein sample are loaded into the wells of an SDS-PAGE gel. Selecting a proper loading control whose signal remains constant under the tested conditions is essential in order to properly interpret the results of the western blot experiment.

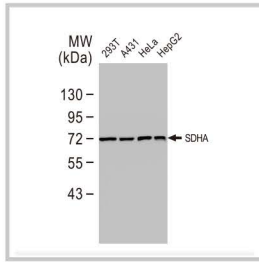
### Why Choose GeneTex Loading Controls?

- ✓ Validated in Multiple Species
- ✓ Suitable for Various Applications
- ✓ Well-Cited in Publications
- ✓ Products for Every MW Range

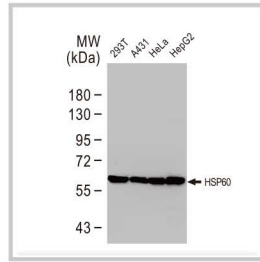
MW (kDa)	Cytosol	Nucleus	Cytoskeleton	Mitochondria	Serum
124			Vinculin		
77					Transferrin
73				SDHA	
69					Albumin
66		Lamin B1			
60				HSP60	
55			alpha Tubulin		
50			beta Tubulin		
42			beta Actin		
38		TBP			
36	GAPDH				
29		PCNA			
20			Cofilin	COX 4	
18	Cyclophilin A				
15		Histone H3			
12				Cytochrome C	


# Selected Products

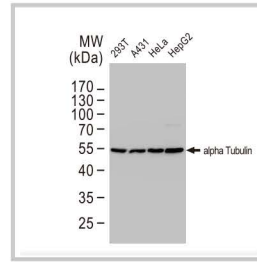
 KO/KD Validated 
  IP/MS Analysis 
  Orthogonal Validation 
  Citation Support




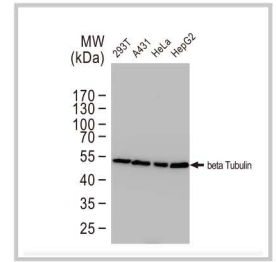
SDHA antibody [GT20710]  
(GTX632636) 




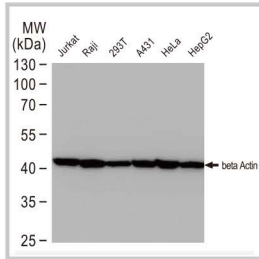
HSP60 antibody (GTX110089)  




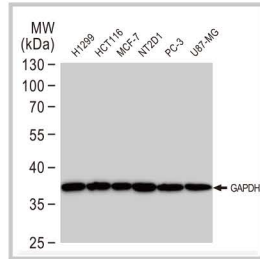
alpha Tubulin antibody  
[GT114] (GTX628802) 



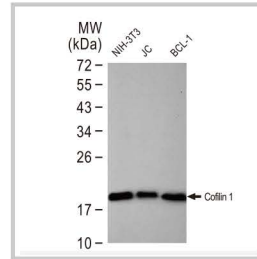
beta Tubulin antibody  
(GTX101279) 



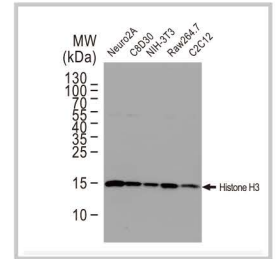
beta Actin antibody [GT5512]  
(GTX629630)   




GAPDH antibody [GT239]  
(GTX627408) 


























Cofilin 1 antibody [GT567]  
(GTX628804) 



Histone H3 antibody  
(GTX122148) 

MW

large  
↓  
small

Cat. No.	Product Name	Host & Clonality	Reactivity	Applications	Validations
GTX109749	Vinculin antibody [N3C1], Internal	Rb pAb	Hu, Ms, Rat	IHC-P, WB	
GTX112729	Transferrin antibody [N3C2], Internal	Rb pAb	Hu, Rat	ICC/IF, IHC-P, WB	
GTX101689	SDHA antibody	Rb pAb	Hu, Ms	ICC/IF, IHC-P, WB	 
GTX632636	SDHA antibody [GT20710]	Ms mAb	Hu, Ms, Rat	ICC/IF, IHC-P, WB	
GTX103292	Lamin B1 antibody	Rb pAb	Hu, Hm	IHC-P, IP, WB	 
GTX110089	HSP60 antibody	Rb pAb	Hu, Ms, Rat, Hm	ELISA, ICC/IF, IHC-P, WB	
GTX112141	alpha Tubulin antibody	Rb pAb	Hu, Ms, Chk, Dm, Rat	ICC/IF, IHC-Fr, IHC-P, WB	 
GTX628802	alpha Tubulin antibody [GT114]	Ms mAb	Hu, Ms, Dm, Rat, Zfsh	ICC/IF, IHC-Fr, IHC-P, WB	
GTX101279	beta Tubulin antibody	Rb pAb	Hu, Ms, Rat, Hm	ICC/IF, IHC-P, WB	
GTX109639	beta Actin antibody	Rb pAb	Hu, Ms, Dog, Dm, Pig, Rat, Yeast, Cat, Hm, Hrs, plnt, Rice, C. albicans, Xenopus	ICC/IF, IHC-P, IP, WB, IB	  
GTX629630	beta Actin antibody [GT5512]	Ms mAb	Hu, Ms, Dm, Rat, Zfsh, Yeast, Goat, Rb, Xenopus	ICC/IF, IHC-P, WB	  
GTX634166	TBP antibody [GT453]	Ms mAb	Hu	WB	
GTX100118	GAPDH antibody	Rb pAb	Hu, Ms, Dog, Dm, Mk, Pig, Rat, Zfsh, Yeast, E. coli, Fsh, Hm, Rb, Bacteria, Bov, Mosq	ICC/IF, IHC-P, IP, WB	
GTX627408	GAPDH antibody [GT239]	Ms mAb	Hu, Ms, Dm, Mk, Pig, Rat, Zfsh, Yeast, E. coli	EMSA, ICC/IF, IHC-P, WB	
GTX100539	PCNA antibody	Rb pAb	Hu, Ms, Rat	ICC/IF, IHC, IHC-Fr, IHC-P, IP, WB, FISH	 
GTX102156	Cofilin 1 antibody	Rb pAb	Hu, Ms, Rat	ICC/IF, IHC-Fr, IHC-P, WB	 
GTX628804	Cofilin 1 antibody [GT567]	Ms mAb	Hu, Ms, Rat	ICC/IF, IHC-P, WB	
GTX114330	COX4 antibody	Rb pAb	Hu, Ms, Rat	ICC/IF, IHC-P, WB	 
GTX628886	COX4 antibody [GT6310]	Ms mAb	Hu, Rat	ICC/IF, IHC-P, WB	 
GTX104698	Cyclophilin A antibody [C1C3]	Rb pAb	Hu, Ms, Hm	ICC/IF, IHC-P, WB	  
GTX122148	Histone H3 antibody	Rb pAb	Hu, Ms, Dm, Mk, Rat, Rice	ICC/IF, IHC-P, IP, WB, ChIP assay	
GTX108585	Cytochrome C antibody	Rb pAb	Hu, Ms, Rat	IHC-Fr, IHC-P, WB	 
GTX633691	Cytochrome C antibody [GT577]	Ms mAb	Hu, Ms, Rat	IHC-P, WB	

 GeneTex

International

Tel 886.3.6208988 Address 6F-2, No.89, Dongmei Rd., Hsinchu 300, Taiwan (R.O.C.)  
Fax 886.3.6208989 E-mail [international@genetex.com](mailto:international@genetex.com)

USA

Toll-free 1.877.GeneTex(1.877.436.3839)  
Fax 1.949.309.2888

Address 2456 Alton Parkway, Irvine, CA 92606 USA  
E-mail [info@genetex.com](mailto:info@genetex.com)

[www.genetex.com](http://www.genetex.com)

PD-L001-190401